



Howdy LCS Families,

We hope you are enjoying your summer with your family. The start of school is just around the corner. We are busy here on campus working and planning for the 2024-2025 school year. We are excited for the new year and can't wait to see all of you on the first day of school, which is Tuesday, August 6th at 8am. This is a **MINIMUM** day for Kindergarten-8th grade-daycare **IS** available.

(Kindergarten will be **MINIMUM** days Wednesday-Friday of the first week and daycare **IS** available).

Please see the attached information regarding the following:

- Classroom Supply List
- 2024-2025 LCS School Calendar
- Carline Procedure
- Accessing FACTS
- Picture Day Information
- Uniform Information

Back to School Night-Tuesday, August 6th at 5:30pm

- 6th-7th-8th grade only (Parents & Jr. High students only)
- More details to follow as the start of school approaches

Back to School Night-Thursday, August 8th at 6:30pm

- Kindergarten-5th grade only

Please enjoy the rest of your summer. We will continue to pray for our families, students and the coming school year. If you have any questions, please contact the LCS office.

Blessings,  
LCS Staff

# Lodi Christian School

## 2024-2025 Academic Calendar

### August 2024

Sun	Mon	Tues	Wed	Thur	Fri	Sat
				1	2	3
4	5	6	7	8	9	10
11	12	13	14	15	16	17
18	19	20	21	22	23	24
25	26	27	28	29	30	31

6th = Start School-Minimum Day  
7th-9th = Kindergarten Minimum Days

### September 2024

Sun	Mon	Tues	Wed	Thur	Fri	Sat
1	2	3	4	5	6	7
8	9	10	11	12	13	14
15	16	17	18	19	20	21
22	23	24	25	26	27	28
29	30					

2nd = Labor Day/No School  
11th = Minimum Day

### October 2024

Sun	Mon	Tues	Wed	Thur	Fri	Sat
		1	2	3	4	5
6	7	8	9	10	11	12
13	14	15	16	17	18	19
20	21	22	23	24	25	26
27	28	29	30	31		

7th-11th = Fall Break  
21st-25th = K-5th Parent/Teacher Conference  
23rd-25th = 6th-8th Parent/Teacher Conference

### November 2024

Sun	Mon	Tues	Wed	Thur	Fri	Sat
					1	2
3	4	5	6	7	8	9
10	11	12	13	14	15	16
17	18	19	20	21	22	23
24	25	26	27	28	29	30

6th = Minimum Day  
11th = Veteran's Day/No School  
25th-29th = Thanksgiving Break

### December 2024

Sun	Mon	Tues	Wed	Thur	Fri	Sat
1	2	3	4	5	6	7
8	9	10	11	12	13	14
15	16	17	18	19	20	21
22	23	24	25	26	27	28
29	30	31				

11th = Minimum Day  
20th = Minimum Day/NO Daycare  
23rd-31st = Christmas Break

### January 2025

Sun	Mon	Tues	Wed	Thur	Fri	Sat
			1	2	3	4
5	6	7	8	9	10	11
12	13	14	15	16	17	18
19	20	21	22	23	24	25
26	27	28	29	30	31	

1st-3rd = Christmas Break  
15th = Minimum Day  
20th = MLK Day/No School

### February 2025

Sun	Mon	Tues	Wed	Thur	Fri	Sat
						1
2	3	4	5	6	7	8
9	10	11	12	13	14	15
16	17	18	19	20	21	22
23	24	25	26	27	28	

5th = Minimum Day  
7th = Lincoln's Bday/No School  
17th = Washington's Bday/No School

### March 2025

Sun	Mon	Tues	Wed	Thur	Fri	Sat
						1
2	3	4	5	6	7	8
9	10	11	12	13	14	15
16	17	18	19	20	21	22
23	24	25	26	27	28	29
30	31					

5th = Minimum Day  
24th-28th = Spring Break

### April 2025

Sun	Mon	Tues	Wed	Thur	Fri	Sat
		1	2	3	4	5
6	7	8	9	10	11	12
13	14	15	16	17	18	19
20	21	22	23	24	25	26
27	28	29	30			

9th = Minimum Day  
18th = Good Friday/ No School  
21st = Good Monday/No School

### May 2025

Sun	Mon	Tues	Wed	Thur	Fri	Sat
				1	2	3
4	5	6	7	8	9	10
11	12	13	14	15	16	17
18	19	20	21	22	23	24
25	26	27	28	29	30	31

7th = Minimum Day  
26th = Memorial Day/No School  
29th = Last Day of School/Minimum Day/NO Daycare

### June 2025

Sun	Mon	Tues	Wed	Thur	Fri	Sat

Lodi Christian School

Office Hours

Monday-Friday 7:30am-3:30pm

209-368-7627 (ROAR)

\*\*\*Dates subject to change

FIRST-LAST DAY OF SCHOOL

NO SCHOOL - BREAKS

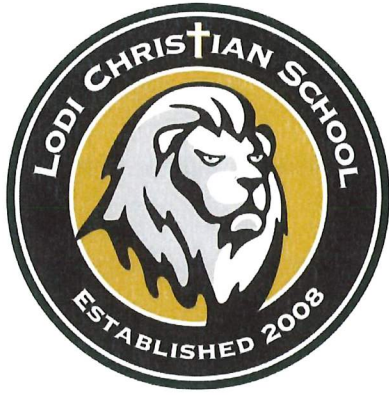
MINIMUM DAYS

180 School Days

No Daycare Available

December 20th & May 29th

Revised 1/25/2024



# Lodi Christian School Carline Procedures

Listed below you will find the carline procedures for the 2024-2025 school year. Please be sure to read all information and follow procedures accurately to keep everyone safe.

- Use Tokay Street entrance ONLY to enter and exit the school campus.
- Follow the signage for LCS carline and continue to follow as outlined on the map.
- If parking, please use the designated parking areas as outlined on the map.
- Everyone MUST use the crosswalk (for everyone's safety).
- ALL students MUST be accompanied by an adult when walking through the parking lot.
- Parking is NOT permitted along any red curb in the front of the school.
- Please do not stay at the curb and talk with other students, parents, or staff members.
- If you are picking up multiple students of different grades, we suggest you come pick up at the latest time of your oldest student OR park in the designated "WAIT" area located on the map until all your students are out for pick up. Please DO NOT wait at the curb for your student to come out.



WEST TOKAY STREET

Site Entry

WAIT AREA

STAFF PARKING

GENERAL PARKING

PRESCHOOL PARKING

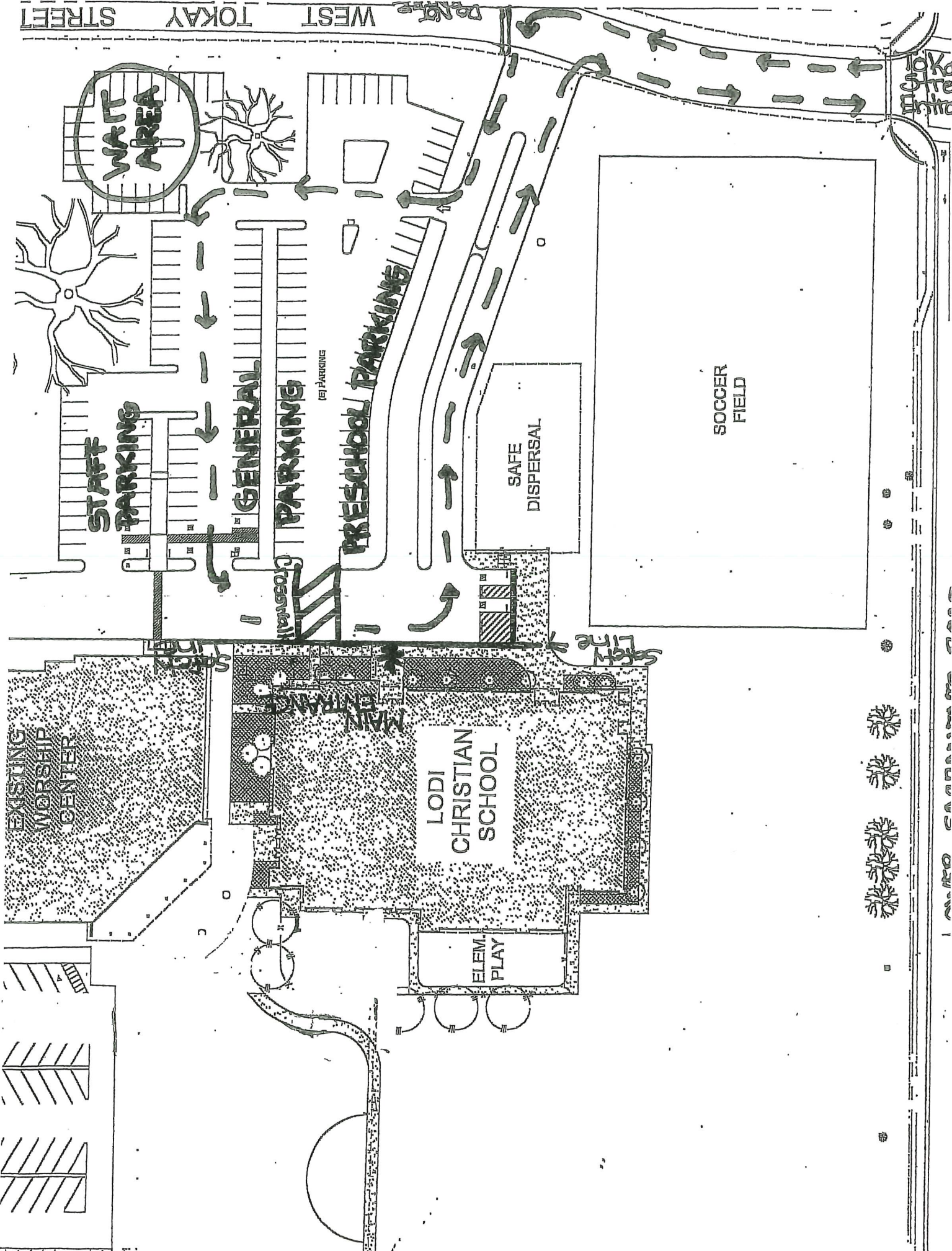
SAFE DISPERSAL

SOCCER FIELD

EXISTING WORSHIP CENTER

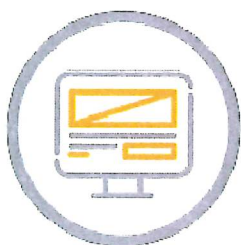
LODI CHRISTIAN SCHOOL

ELEM. PLAY



1 1/4" = 1'0" GRAPHIC SCALE





ACCESSING

## FACTS Family Portal

FACTS gives you the opportunity to get more involved in your child's academic progress and future success by using FACTS Family Portal, a private and secure portal that allows you to view academic information specific to your children, while protecting their information from others. You may view your child's grades, attendance, homework, conduct, as well as other useful school information.

### HOW TO ACCESS FACTS FAMILY PORTAL

1. From [FACTSmgmt.com](http://FACTSmgmt.com), click **Family Login**, then click **FACTS Family Portal**.
2. Click **Create new account**.
3. Type your school's **District Code**
4. Type your **Email Address**.
5. Click **CREATE ACCOUNT**. An email will be sent which includes a link to create your Family Portal Login. The link is active for 6 hours.
6. Click the **Create your Family Portal Login** link in the email.
7. Type a **Username** and **Password**.
8. Click **Create Account**.
9. Click **Back to log in** and use your new credentials to log in.

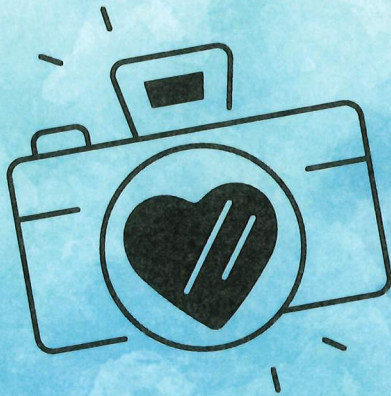


# Lodi Christian School Picture Day

Tuesday, August 13th  
Kindergarten - 3rd grade

Wednesday, August 14th  
4th - 5th grade  
Preschoolers  
Monday-Wednesday-Friday

Thursday, August 15th  
6th - 8th grade  
Preschoolers  
Tuesday-Thursday



Order forms will be sent  
home as picture day  
approaches. Uniform dress  
is mandatory.

Make up day to be determined at a later date



Lodi Christian School  
Uniform Information  
Kindergarten - 5th grade  
2024-2025

Uniform Summary, Elementary Uniform Guide and Order Form and are included-

- Uniform description information
- Elementary Uniform Guide is Kindergarten - 5th grade
- If you are unable to print the order form, stop by the LCS office for a hard copy.  
Monday-Thursday, 8am-12pm (Summer hours).

ALL uniform order forms and payment will need to be submitted to the LCS office by the given due dates. Orders turned in after the current due date will be submitted in the next round of orders. Payment MUST accompany the order form. Orders will NOT be processed without payment. Please make checks payable to All Sports. All credit card payments will be processed through All Sports.

Personalization is an option this year for LCS sweatshirts and hoodies. There is a \$10 charge per item. Your student's LAST name will appear on the right side bottom cuff of the sweatshirt or hoodie. This is a great addition to helping us find the rightful owner during the school year and cut down on lost and found items.

LCS Handbook Guidelines and Information-

**UNIFORM - Everyday Wear:**

- **Boys:** Khaki or black uniform cotton twill pants or shorts. Polo shirts in black, gold, or white purchased exclusively from one of our local providers with the Lodi Christian logo. Any undershirts must be white or the same color as the polo worn.
- **Girls:** Khaki or black uniform cotton twill pants, capris, shorts (no shorter than 5" above the knee cap and cannot be rolled), skorts, and skirts (no shorter than 3" above the knee cap and cannot be rolled). Polo shirts in black, gold, or white must be purchased exclusively from one of our local providers with the Lodi Christian logo. Any undershirts must be white or the same color as the polo worn. The LCS plaid skirt and jumper (purchased through our local provider) may be worn any day with a black or white LCS polo or white uniform blouse. SOLID BLACK leggings or SOLID BLACK OR SOLID WHITE tights can be worn under a skirt, jumper, or skort only (no patterns or other colors will be allowed).
- 6th, 7th & 8th grade students ONLY are allowed to wear jeans everyday of the week (following the guidelines stated for jeans)

**GENERAL STYLE:**

All khaki or black pants, capris, skirts, skorts, and shorts must be "uniform" style and fabric. These can be purchased from the uniform section of the following stores: Target, JCPenney, Wal-Mart, Old Navy, Gap, Macy's, Dillard's, and Zuester's. Lands End and French Toast are online companies. **No denim, no cargo pants, and no low-rise pants/shorts.** Clothing should fit properly, neither too tight nor too baggy. All clothes should be clean and neat, containing no holes or graffiti. Shirts with tails must be tucked in. Flat-bottomed shirts may be worn untucked as long as it does not look sloppy. Belts must also be worn if needed to keep pants or skirts from "sagging". BLACK ON BLACK IS ACCEPTABLE.

# Lodi Christian School

2024-2025

## UNIFORM SUMMARY

<u>Item</u>	<u>Material</u>	<u>Grades</u>	<u>Requirements</u>
Slacks	khaki/black twill	K-8	
Shorts	khaki/black twill	K-8	no shorter than 5" above knee
Skorts	khaki/black twill	K-8	no shorter than 5" above knee
Skirt	khaki/black twill/LCS Plaid	K-8	no shorter than 3" above knee
Jumper	khaki/LCS Plaid	K-8	no shorter than 3" above knee

Please note: Above items may be purchased from any uniform department store.

**\*Polo Shirt:** -Short or Long Sleeve  
-Lodi Christian Logo  
**-Black, White or Gold Only**

**White blouse:** -Button-down with collar  
-Can be worn with plaid or khaki jumpers tucked in

**\*LCS Logo/Lion Sweatshirt:** -Full-Zip Hooded, Pullover or Crewneck  
-Grey or Black

**\*LCS Jr. High Sweatshirt:** -Pullover Hooded (special design)  
**- 8th Grade Only**

**\*PE/Athletic Shorts:** -required for 6th, 7th & 8th grade PE  
-required for any athletics played  
-required for all K-8 students on special event days: ie, health challenge, field day, etc.

**Shoes/Socks:** -No sandals, flip-flops, heels, cowboy boots, slippers, open-toe or heel shoes, no lights or blinking  
-Sturdy, should fit securely with ties, velcro or elastic  
-Athletic-type footwear is acceptable if clean and neat  
-Socks must be worn at all times and can be any color

**Tights:** White or Black (solid, no logos or patterns)

**Leggings:** Black only under skirt

### LOCAL UNIFORM PROVIDER

ALL SPORTS

1371 E. Pine St. Lodi Ca. 95240

(209) 339-4204

[www.allsportsscreenprint.com](http://www.allsportsscreenprint.com)

***Please refer to the LCS Handbook for additional dress code information and guidelines.***





# LODI CHRISTIAN SCHOOL

## Elementary

*Thank You*  
FOR YOUR SUPPORT

*Page 1*

PLEASE PUT COLOR SIZE AND AMOUNT YOU NEED ON ORDER PAGE  
ADD THE PARENT LAST NAME, GRADE, AND PHONE NUMBER ON YOUR ORDER



**CREW NECK**

**COMES IN GREY OR BLACK**

PC90Y S-XL YOUTH \$34.00

PC90 S-XL ADULT \$42.00

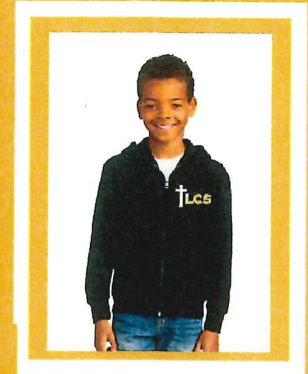


**HOODIE**

**COMES IN GREY OR BLACK**

PC90YH S-XL YOUTH \$38.00

PC90H S-XL ADULT \$48.00



**ZIPPER HOODIE**

**COMES IN BLACK, GREY**

PC90YZH YOUTH XS-XL \$38.00

PC90ZH ADULT S-XL \$48.00



**STANDARD LONG SLEEVE POLO 2023-2024**

**COMES IN BLACK, WHITE**

Y500LS YOUTH XS-XL \$25.00

K500LS ADULT S-XL \$27.00



**DRI FIT POLO**

**COMES IN BLACK ONLY**

YST640 YOUTH XS-XL \$27.00

ST640 ADULT S-XL \$29.00

ST640 ADULT 2XL \$31.00



**BASIC POLO 2024-2025**

**COMES IN BLACK, WHITE**

**EXTRA SMALL NOT AVAILABLE**

8800B YOUTH S-XL \$23.00

8800 ADULT S-XL \$25.00



**STANDARD POLO 2023-2024**

**COMES IN GOLD, BLACK, WHITE**

Y500 YOUTH XS-XL \$23.00

K500 ADULT S-XL \$25.00



CUSTOM  
SCREEN PRINT & EMBROIDERY LLC  
LODI, CA

(209) 339-4204

1371 EAST PINE STREET

STE 7

LODI, CA 95240



